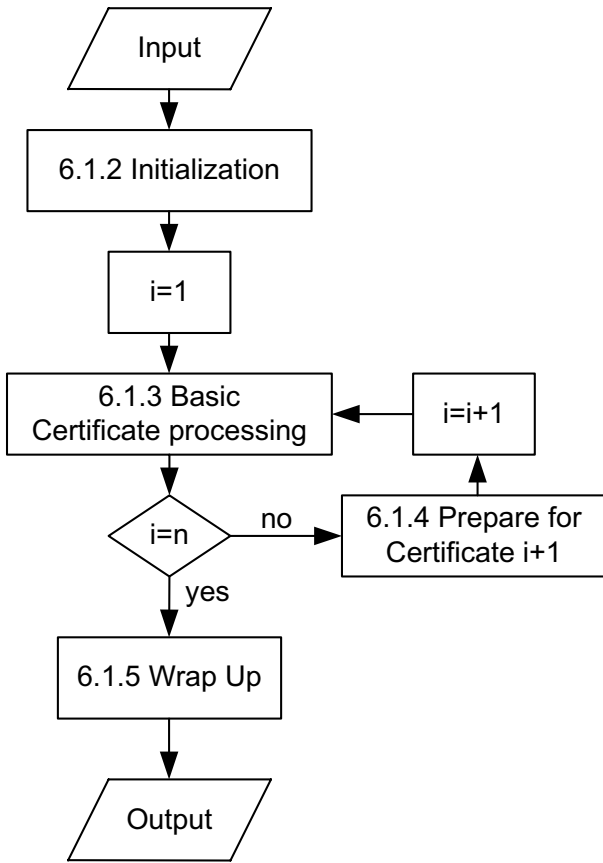
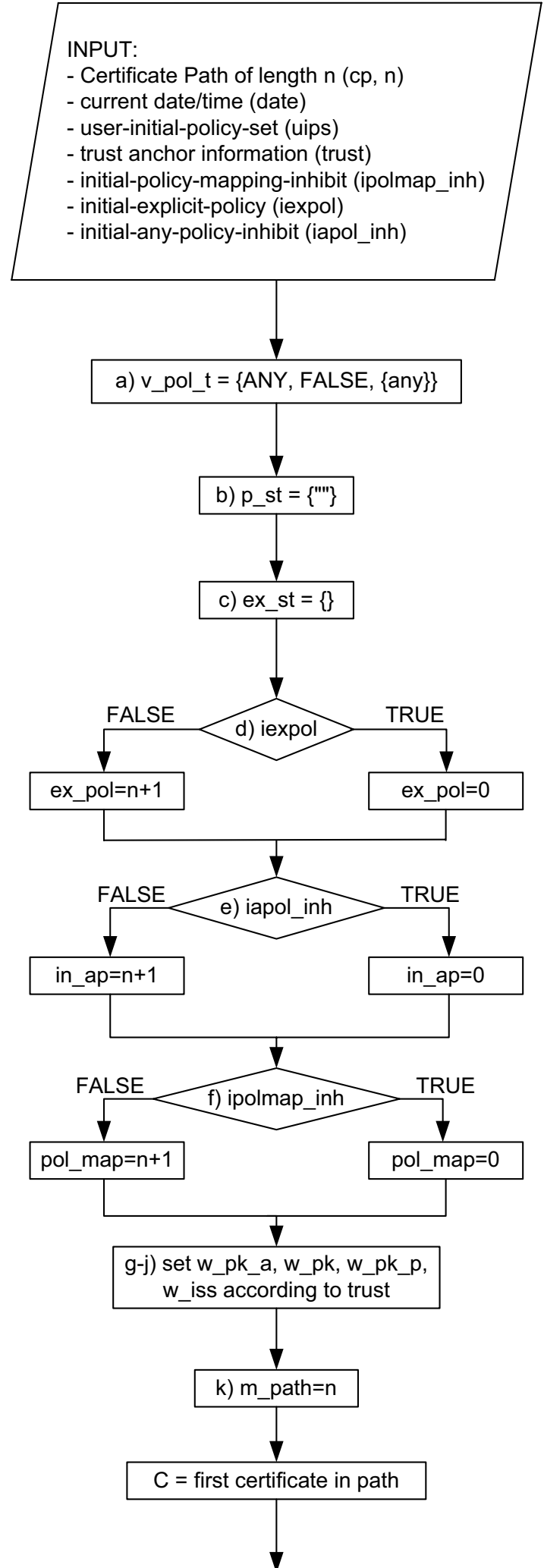


Certificate Path Processing (RFC 3280)

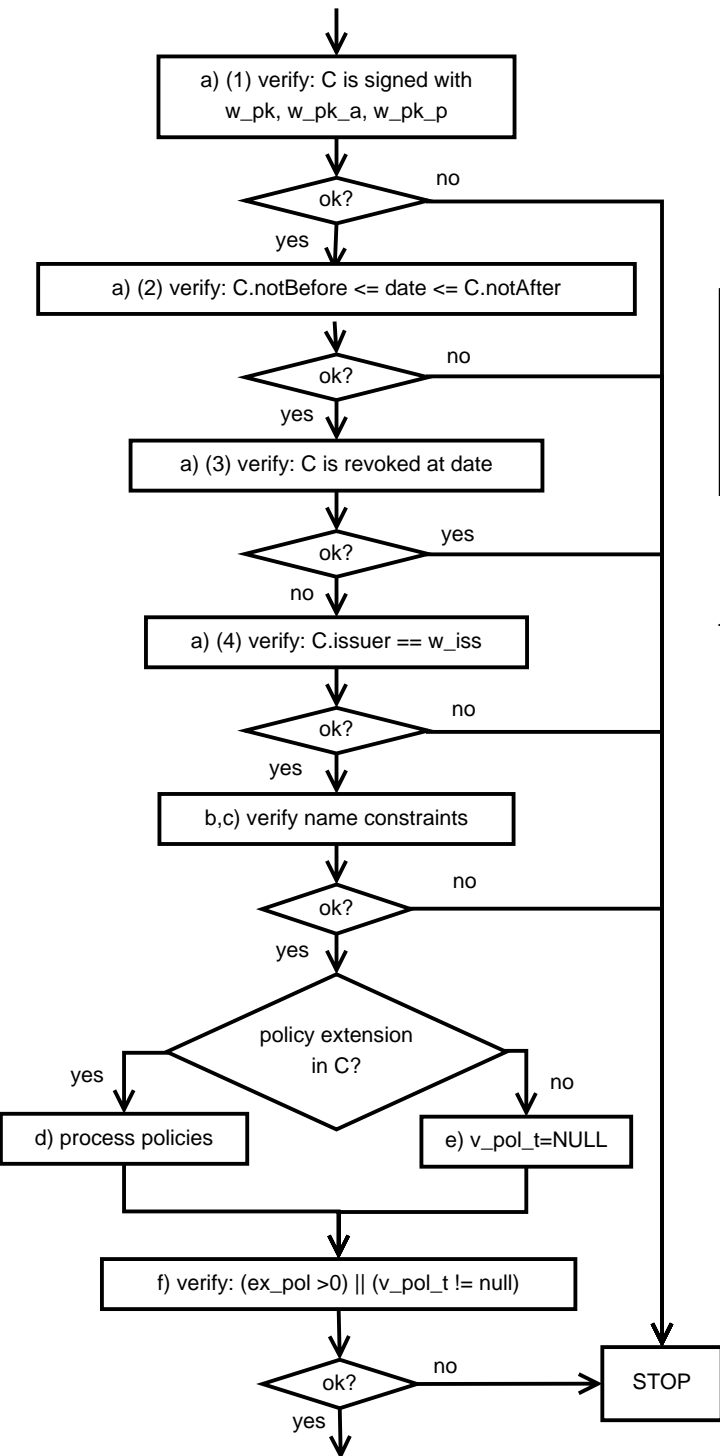


VARIABLEN:

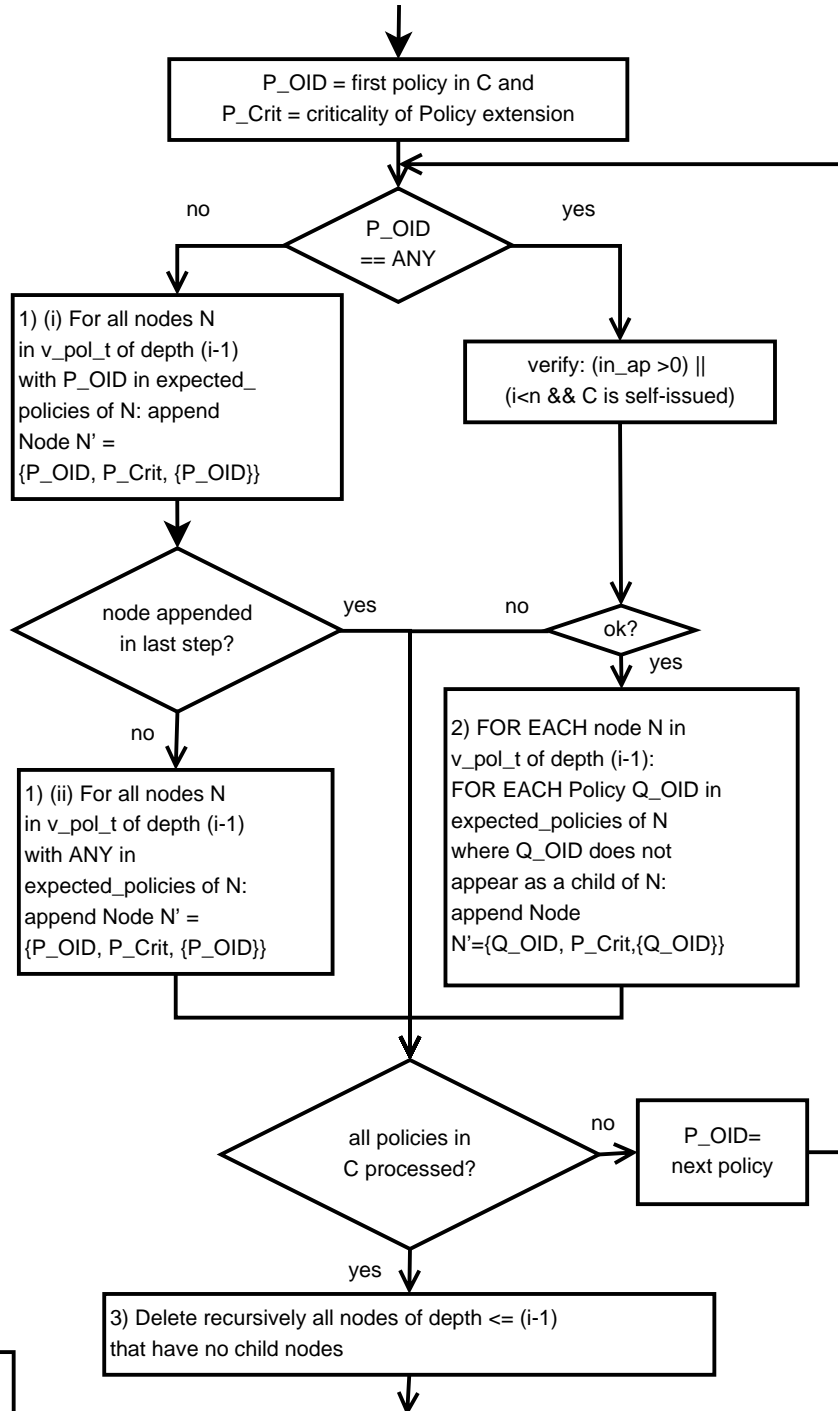
cp: certificate path
 n: length of cp
 i: iteration counter
 C: current certificate
 uips: user-initial-policy-set
 ipolmap_inh: initial-policy-mapping-inhibit
 iexpol: initial-explicit-policy
 iapol_inh: initial-any-policy-inhibit
 v_pol_t: valid_policy_tree
 p_st: permitted_subtrees
 ex_st: excluded_subtrees
 ex_pol: explicit_policy
 in_ap: inhibit_any-policy
 pol_map: policy_mapping
 w_pk: working_public_key
 w_pk_a: w_pk_algorithm
 w_pk_p: w_pk_parameters
 w_iss: working_issuer_name
 m_path: max_path_length
 v_pol_n_s: valid_policy_node_set



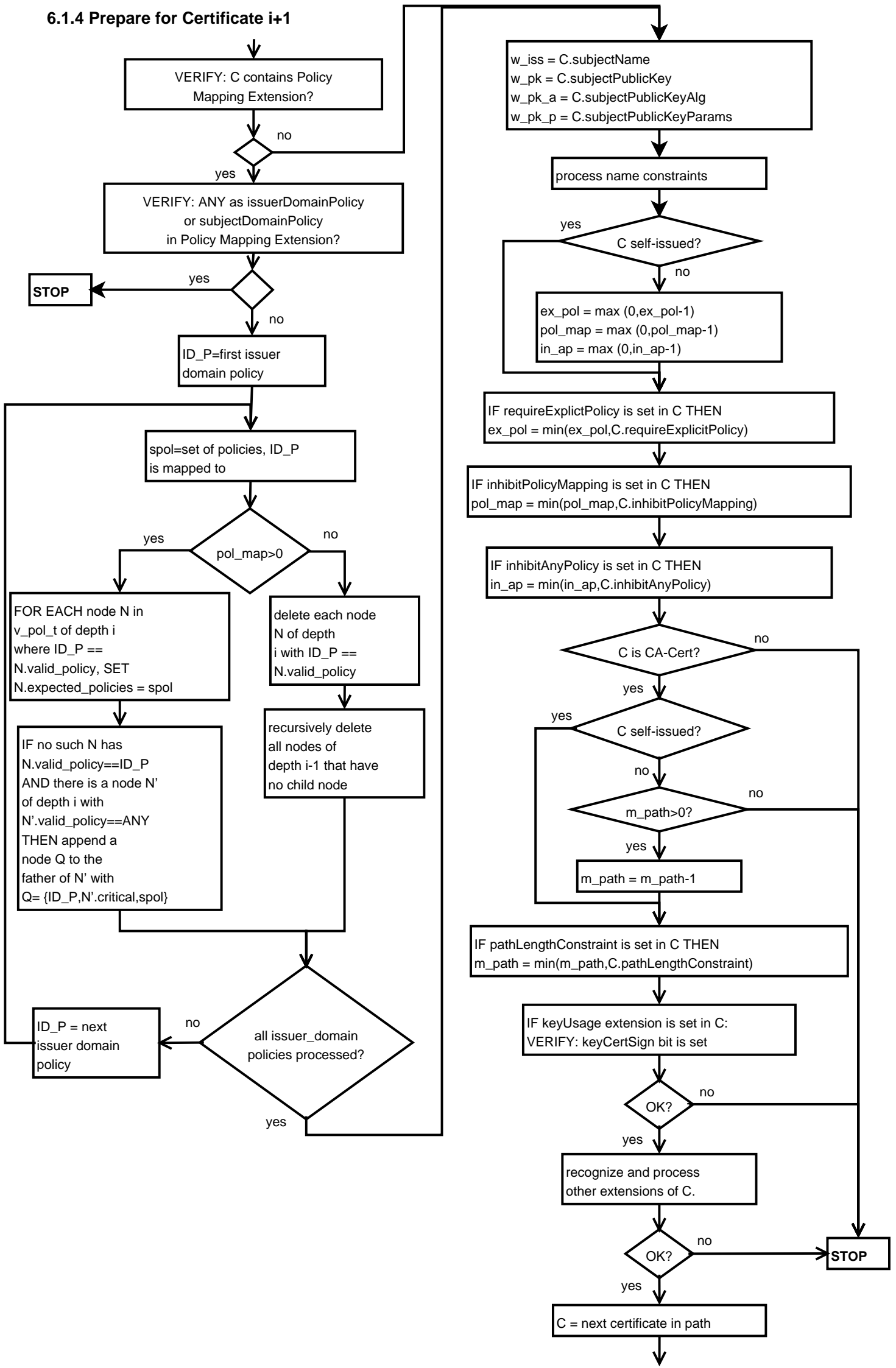
6.1.3 Basic Certificate Processing



6.1.3 d) process policies



6.1.4 Prepare for Certificate i+1



6.1.5 Wrap Up

